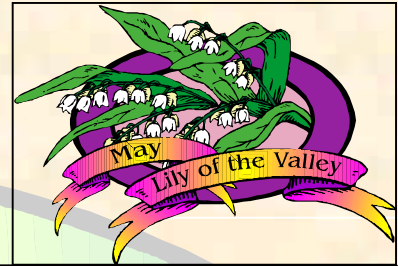


Valley View Press

May 2008



MEMORIAL DAY IS MAY 31st



Memorial Day is a United States federal holiday that is observed on the last Monday in May. This holiday recognizes the U.S. men and women who have died during military service defending our country. A national moment of silence takes place at 3 p.m to remember our fallen heroes. Another tradition is to fly a U.S. flag at half-staff from dawn until noon local time. Many people observe this holiday by visiting cemeteries or memorials and honor those family members who have died. It is also a time for picnics, family gatherings, and sporting events. Some people view Memorial

Meet Our Staff
Brandon Sigmon
 Acting Property Manager
Gladys Huaman
 Leasing Agent
Miguel Romero
 Maintenance Supervisor
Oscar Herrera
 Maintenance Technician

Resident's Night May 15, 2008

Chance for you to meet with the Property Manager for questions, comments and concerns. The groundwork for our neighborhood watch program will be laid out at this time. Meeting will be at 7:00 pm.

Pool Party May 17, 2008

Join us at the pool from 12:00 pm until 3:00 pm. Hotdogs, snacks, and refreshments will be served. Donations are payable at the gate, and all proceeds will go to Lissa Nemec, the baby at our sister property whose mother was critically injured. Come join us in the fun!!!

Mother Day Word Search


B R E A K F A S T F E J I D A U C
 E E J D H A A S T F A V S A S H A
 R T E X R H M H X S T M O J I A R
 D H G S F I D M O T H S N L P P N
 N G S O V U O D I X M V D F O P A
 A U N B A D O A S L G R Y F O Y T
 C A N D Y A H I X B E D L K A E I
 A D A Y K U R G Z N S V I H I S O
 R E T E R A E J A V G F M E A H N
 D O O H E D H R H Y G Y A D N U S
 S B G I Z V T X V G A W F J D A H
 T E L E P H O N E M O T H R H D O
 C Y D A N U M L H D F O E C N K G

BREAKFAST	FAMILY	SUNDAY
CARNATIONS	DAUGHTER	LOVE
TELEPHONE	SON	HAPPY
MOTHERHOOD	CARD	CANDY

Peanut Butter Pie

3/4 c. confectioners sugar
 1/2 c crunchy peanut butter
 1 (3.9 oz) pkg instant chocolate pudding
 1 (1.3 oz) envelope whipped topping mix
 1 (9 inch) pie crust

- Mix and crumble confectioners sugar and peanut butter. Put half into the pie shell and reserve the remaining half.
- Make pudding as directed and pour over peanut butter crumbs. Mix dream whip as directed, and spread over pudding. Sprinkle the top of the pie with the remaining crumb mix.

Early Bird Special	Office Hours	Community Information	Helpful Information
<p>All residents who pay their rent before the 1st of the month will be entered into a drawing to win \$50.00 off of their next months rent.. Drawings will be held on the 1st of the month. Congrats to April's winner. 1301 Valley!!!</p>	<p>Monday-Friday 9:00 am-6:00 pm Closed for Lunch 1:00-2:00 pm Saturday 10:00 am-4:00 pm Important Numbers Office: 813-689-0859 Fax: 813-689-3988 After Hours Emergency Number 813-635-6941</p>	<p>Primary School Colson 813-744-0831 Secondary School Burnett 813-744-6745 High School Armwood 813-744-8040</p>	<p><i>When paying rent, please identify the unit number to assure payment is posted to the correct account.</i></p> <p><i>Thank You</i></p> 

	<h2 style="margin: 0;">May 2008</h2>	
---	--	--

<u>Sunday</u>	<u>Monday</u>	<u>Tuesday</u>	<u>Wednesday</u>	<u>Thursday</u>	<u>Friday</u>	<u>Saturday</u>
				1 RENT IS DUE	2	3
4	5 CINCO DE MAYO!	6 RENT IS LATE	7	8	9	10
11 MOTHERS DAY	12 EVICTIONS FILED	13	14	15 RESIDENTS NIGHT 7 PM - 8 PM	16	17 POOL PARTY 12 PM - 3 PM
18	19	20	21	22	23	24
25	26 OFFICE CLOSED Memorial Day Observed	27	28	29	30	31 Memorial Day

<p style="text-align: center;"><u>Bicycle Safety</u></p> <p>10 Rules for Bicycle Safety</p> <p>Protect your head, wear a helmet Make sure your bicycle is adjusted properly Always check brakes before riding See and be seen Avoid biking at night Always keep a lookout for obstacles in your path The safe way is the "Right of Way" Always be aware of the traffic around you Obey traffic laws Wheels should be securely fastened</p>	<p style="text-align: center;">Did you know ...</p> <p>May is American Bike Month May is flower Month May is National Hamburger Month May is National Mental Month May is National Photo Month May is Asthma & Allergy Awareness Month May 1st May Day May 2nd is Holocaust Remembrance Day May 6th International NO DIET Day May 9th is National Child Care Provider Day May 10th is Clean Your Room Day May 11th is Mother's Day May 13th is Tulip Day May 18th is when Mount Saint Helens Erupted May 22nd is Buy a Musical Instrument Day May 23rd is Penny Day May 24th is when Morse Code was First Used May 25th is National Missing Children's Day May 26th is when Memorial Day Observed May 31st Memorial Day</p>	<p style="text-align: center;"><u>Mother's Day</u></p> <p style="text-align: center;"><i>Mothers need their time, For their thoughts to be clear. Sounds like a crime, That its only one day a year</i></p> <p style="text-align: center;"><i>So make Mother's Day vast, And don't put them in a rush! Cause the one thing that lasts, Is a mother's love for us!</i></p> <p style="text-align: center;"><i>So a big thanks to the mothers, That have raised us so true! You can ask any of the others, We couldn't have lived without YOU!</i></p>
---	---	--